

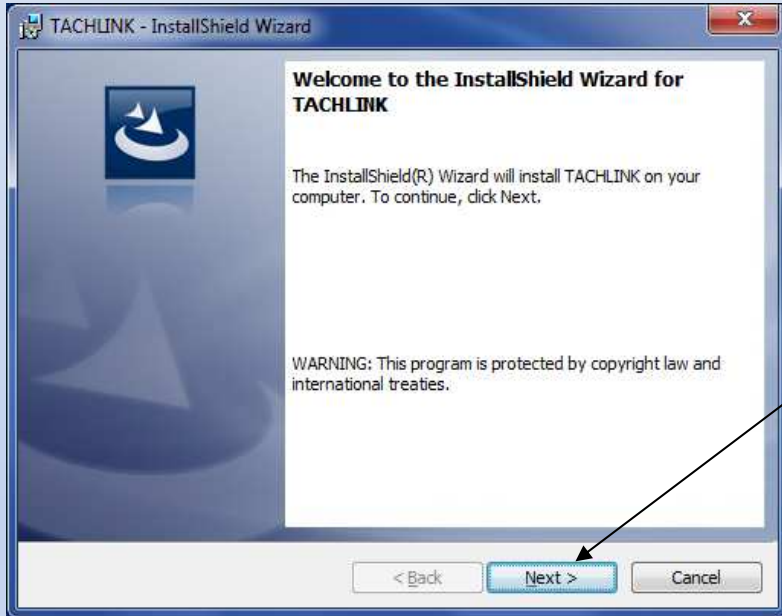


TACHLINK INSTALLATION FOR WINDOWS 7, 32 & 64 BIT OPERATING SYSTEMS

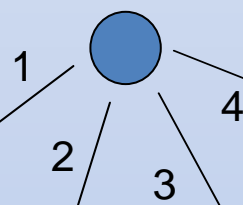
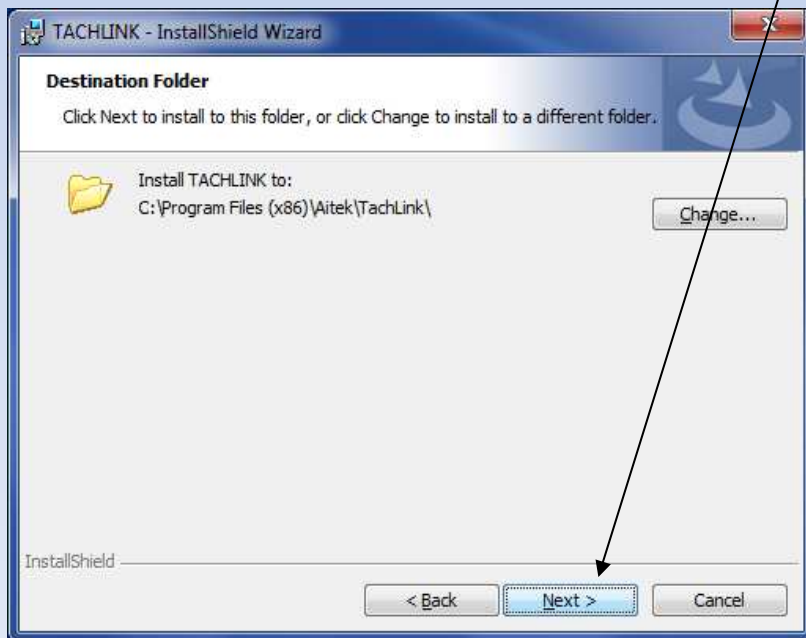
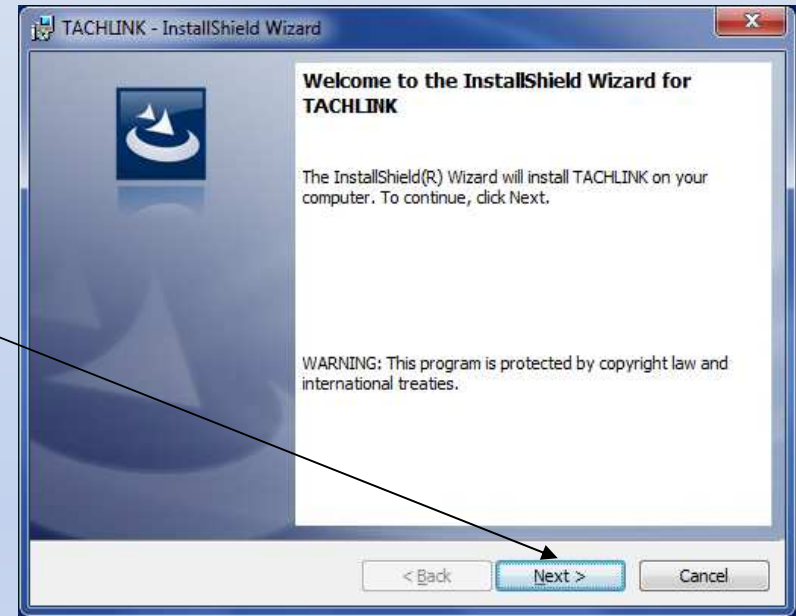
Consult factory if Windows 8 installation is required

- AI-TEK Instruments, LLC • 152 Knotter Drive, P.O. Box 748 • Cheshire, CT USA 06410 •
- Tel: 203-271-6000 • Fax: 203-271-6200 • www.aitekinstruments.com

TACHLINK INSTALLATION FOR WINDOWS 7, 32 & 64 BIT OPERATING SYSTEMS



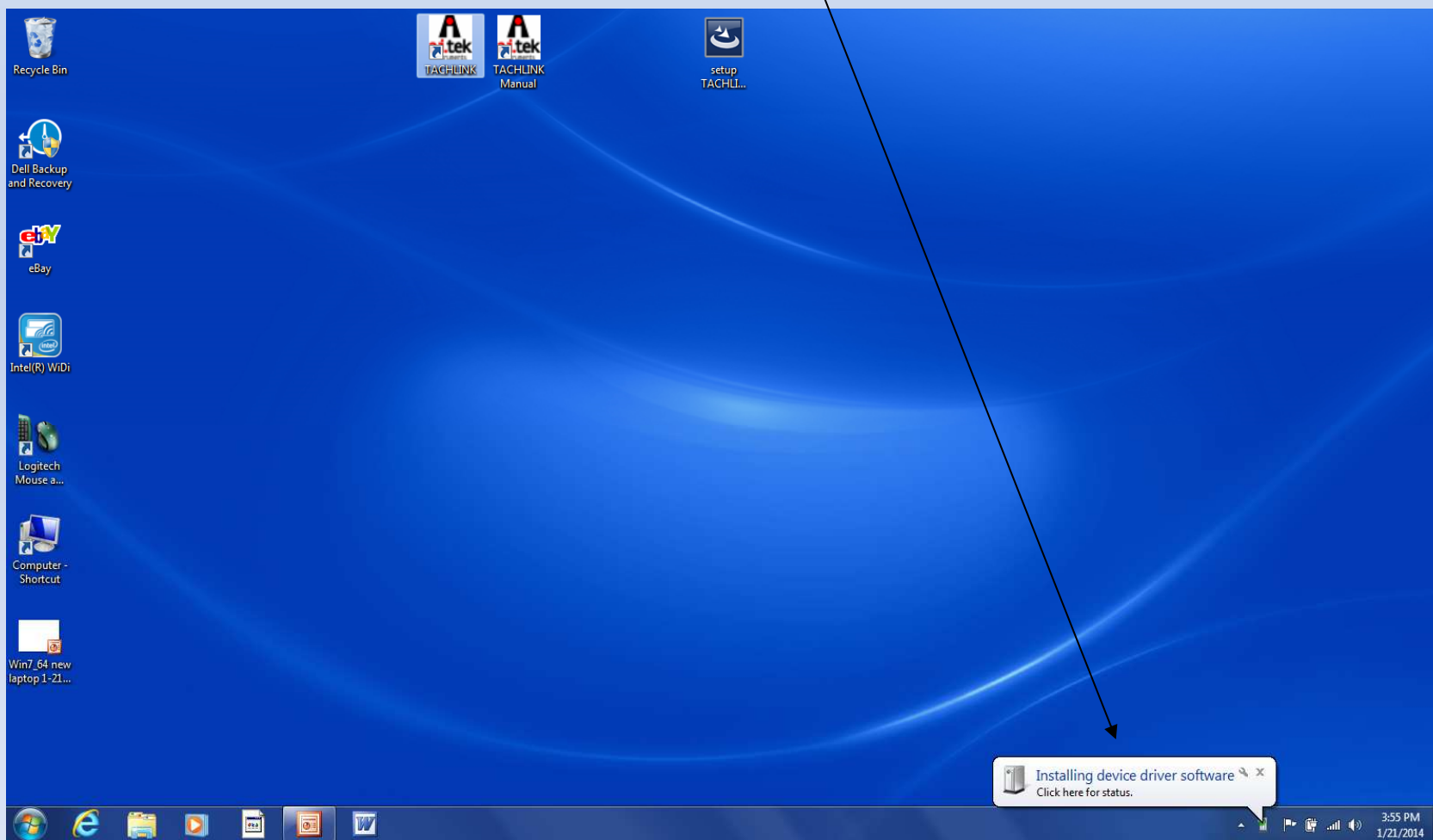
Double click Setup
Install software
as shown



TACHLINK INSTALLATION FOR WINDOWS 7, 32 & 64 BIT OPERATING SYSTEMS



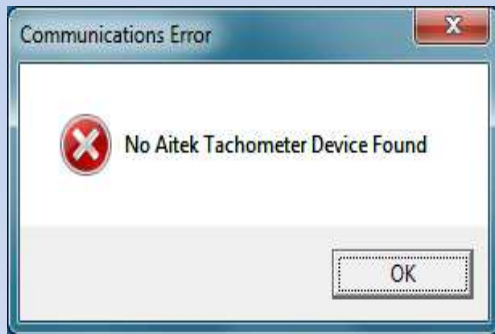
Connect tachometer to PC via USB



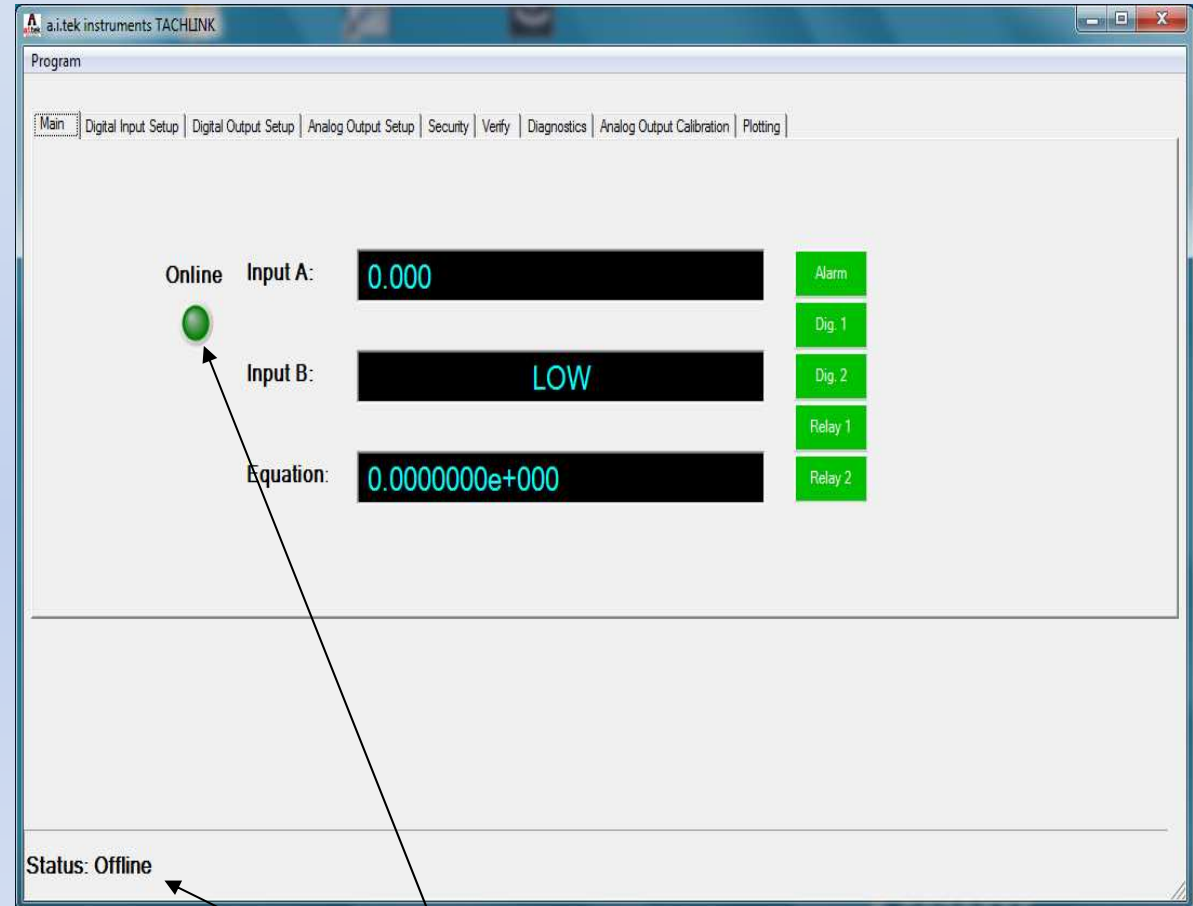
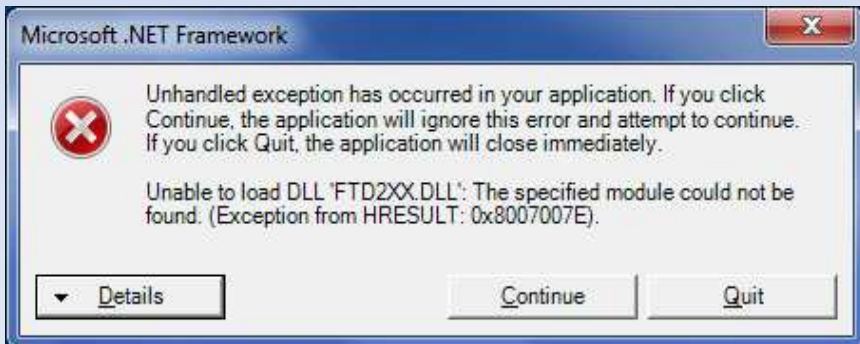
TACHLINK INSTALLATION FOR WINDOWS 7, 32 & 64 BIT OPERATING SYSTEMS



After TACHLINK software installation connect tachometer to PC via USB and launch TACHLINK. If USB drivers have not installed successfully, you will get the following message.

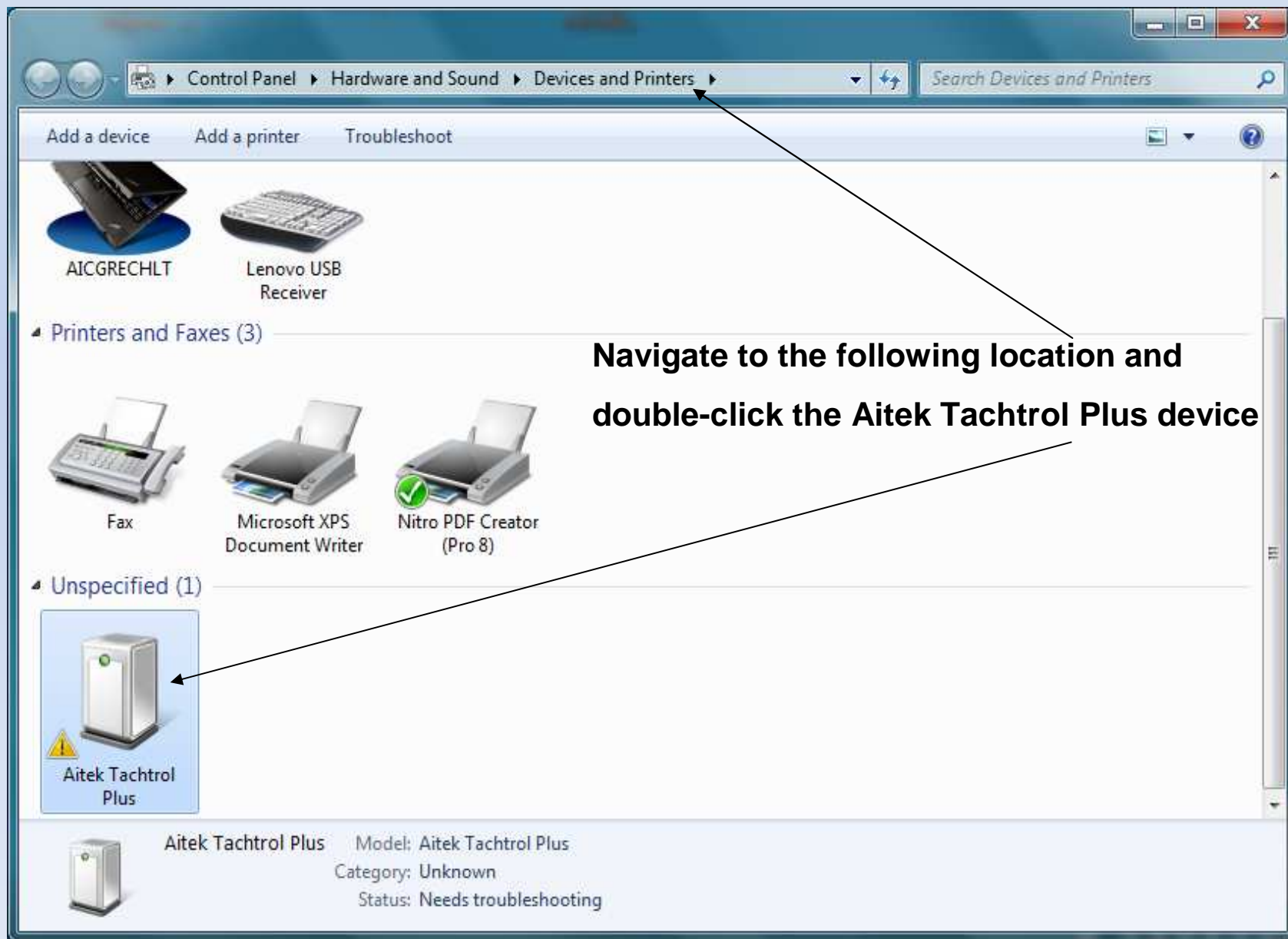


-OR-



The TACHLINK main screen will also indicate there is no communication between PC and tachometer. (The “Online” light will be green but not lit)

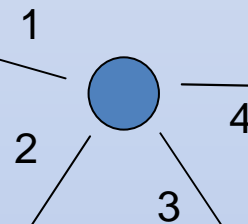
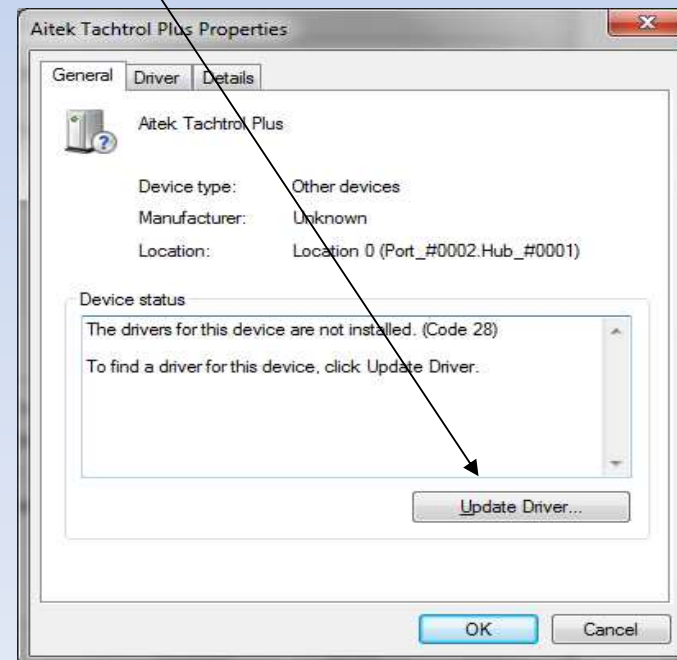
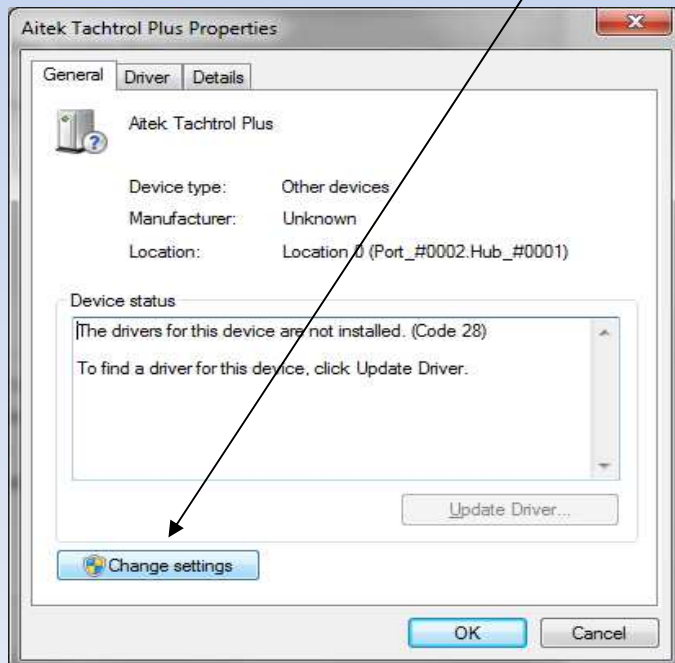
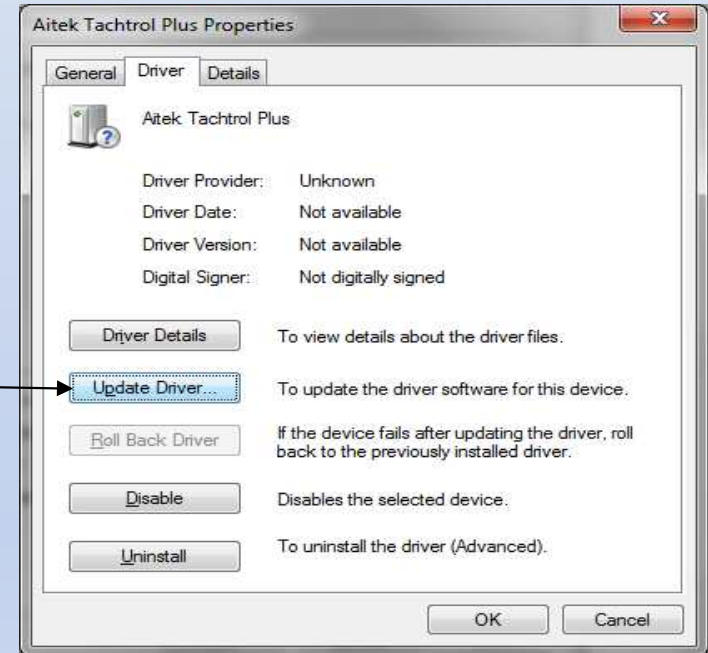
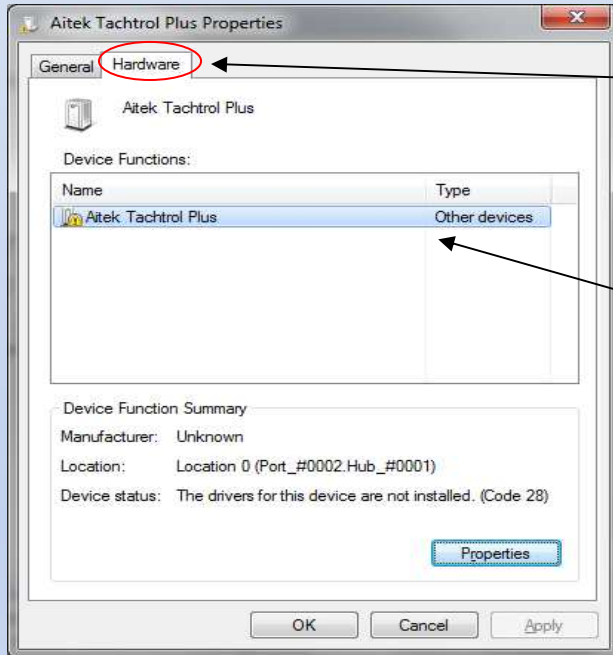
TACHLINK INSTALLATION FOR WINDOWS 7, 32 & 64 BIT OPERATING SYSTEMS



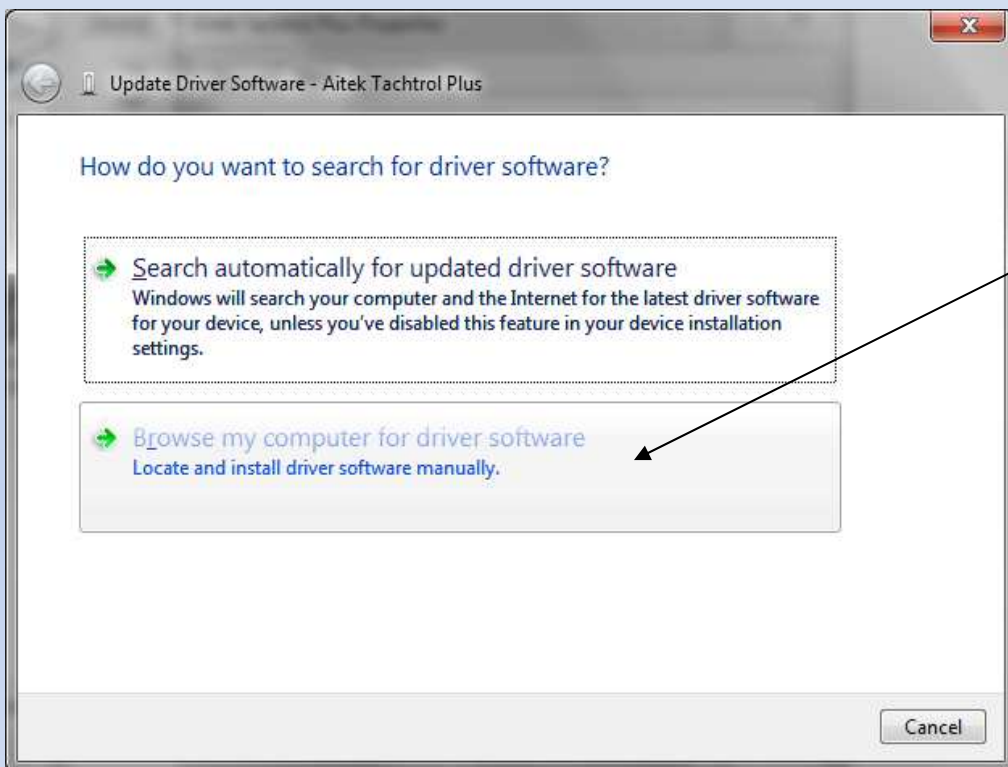
TACHLINK INSTALLATION FOR WINDOWS 7, 32 & 64 BIT OPERATING SYSTEMS



Under Aitek Tachtrol Plus Properties, double click the Aitek Tachtrol Plus device, then follow sequence



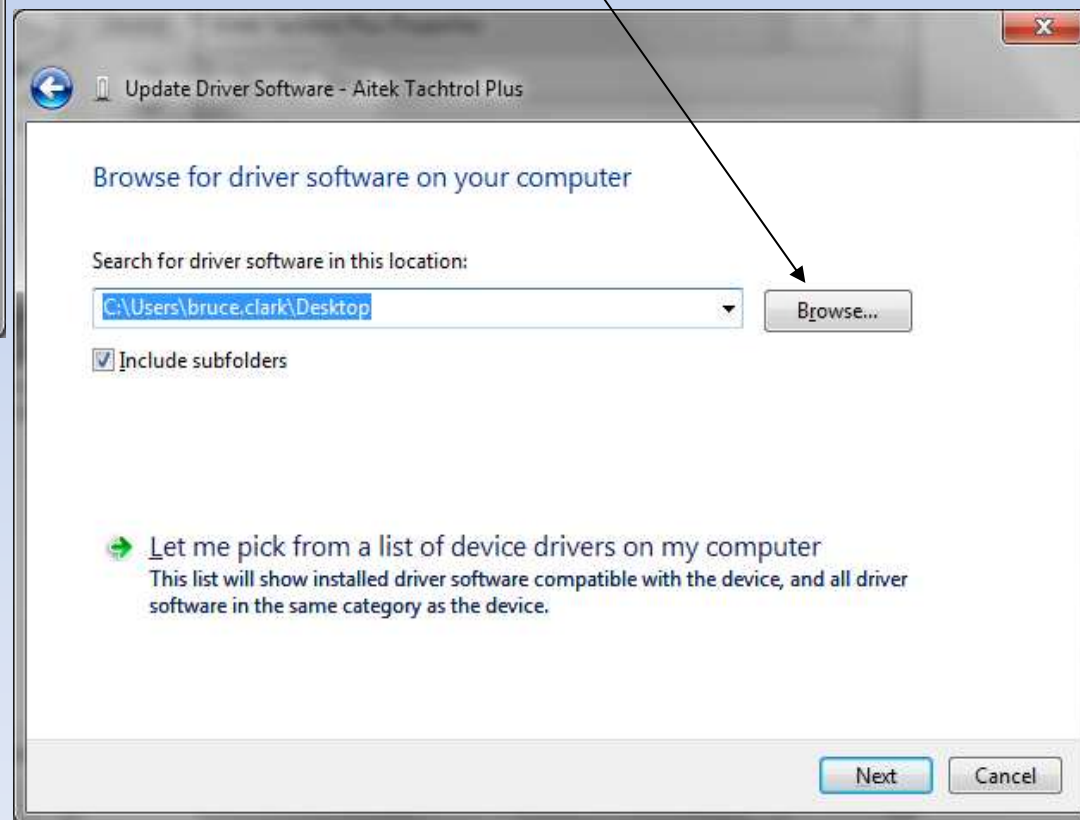
TACHLINK INSTALLATION FOR WINDOWS 7, 32 & 64 BIT OPERATING SYSTEMS



Select Browse

1

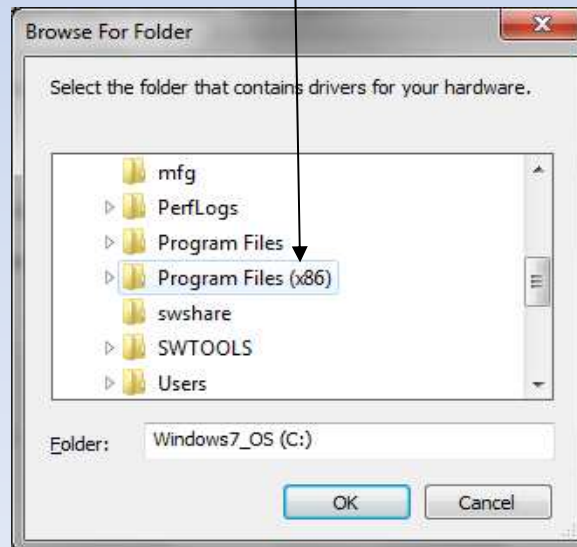
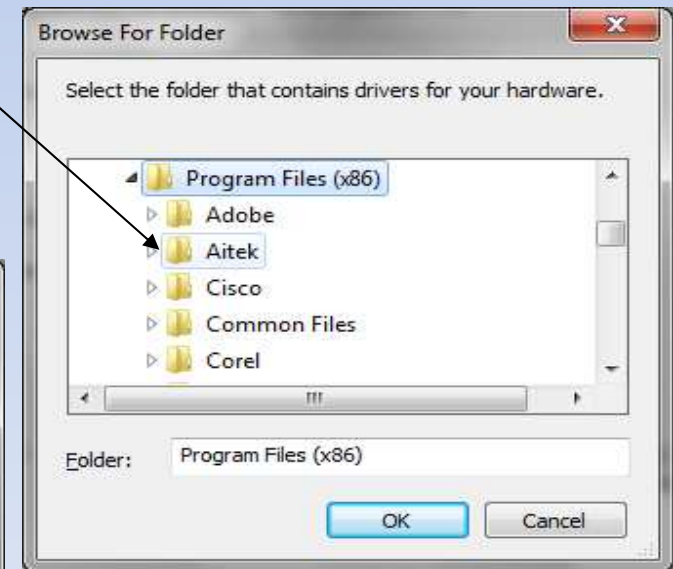
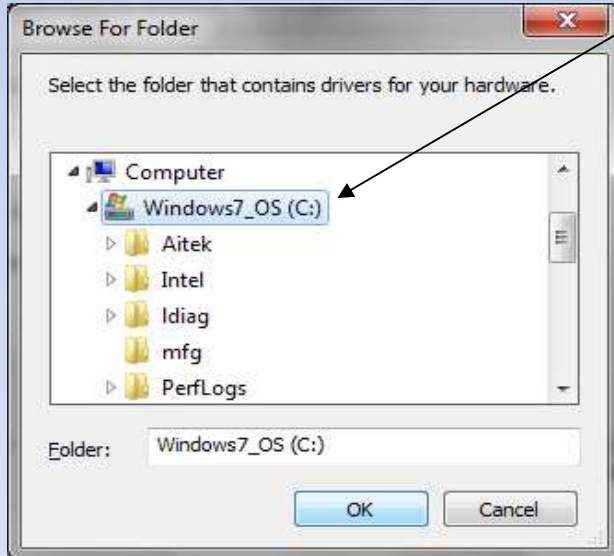
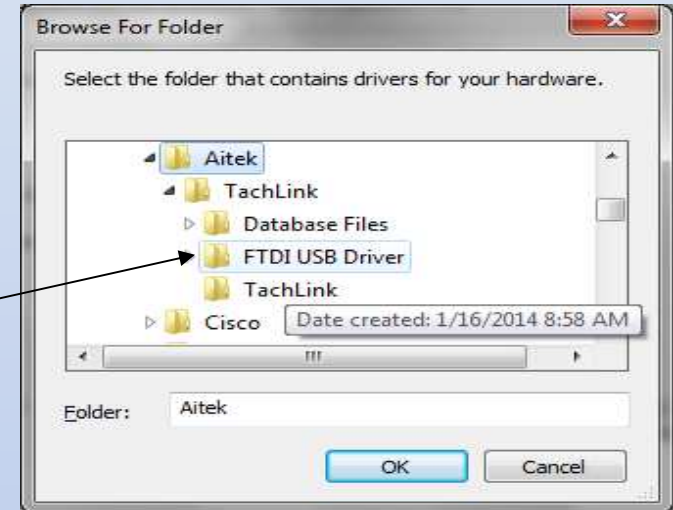
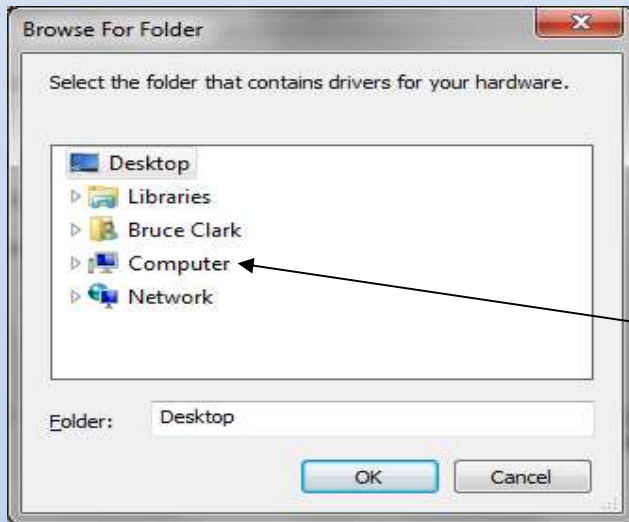
2



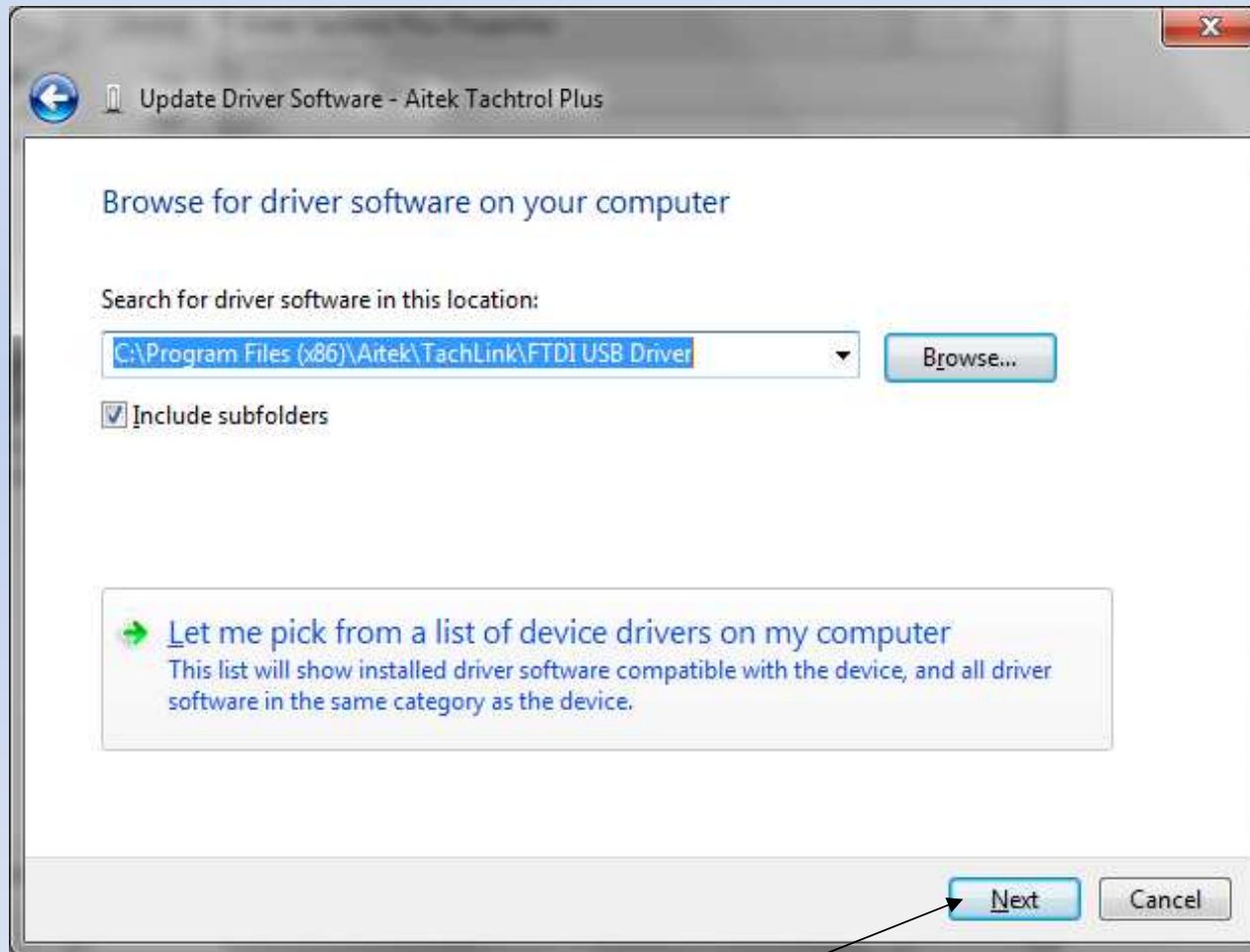
TACHLINK INSTALLATION FOR WINDOWS 7, 32 & 64 BIT OPERATING SYSTEMS



Browse to FTDI USB Driver folder as shown.



TACHLINK INSTALLATION FOR WINDOWS 7, 32 & 64 BIT OPERATING SYSTEMS



Select Next

TACHLINK INSTALLATION FOR WINDOWS 7, 32 & 64 BIT OPERATING SYSTEMS

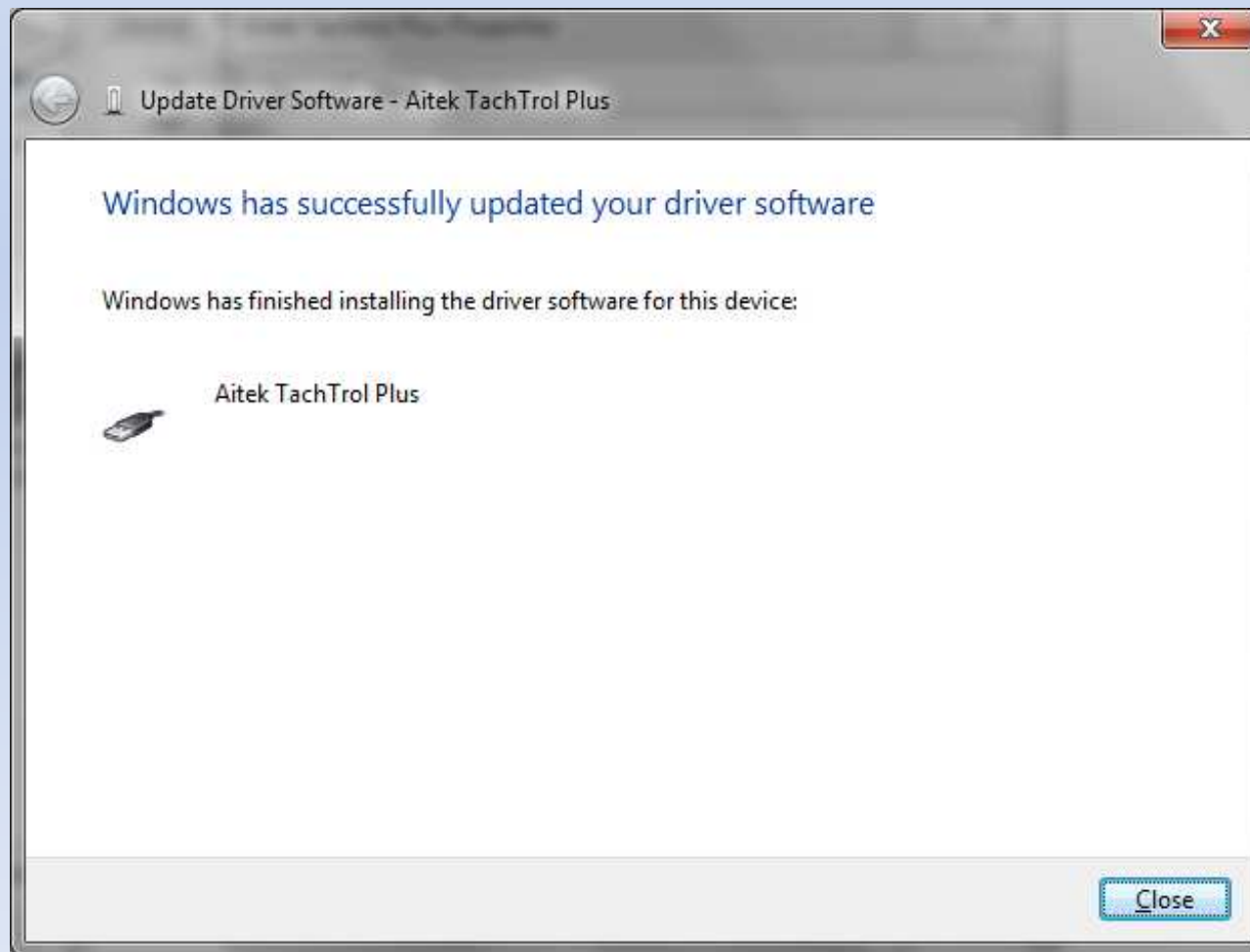


Select Install Anyway

TACHLINK INSTALLATION FOR WINDOWS 7, 32 & 64 BIT OPERATING SYSTEMS



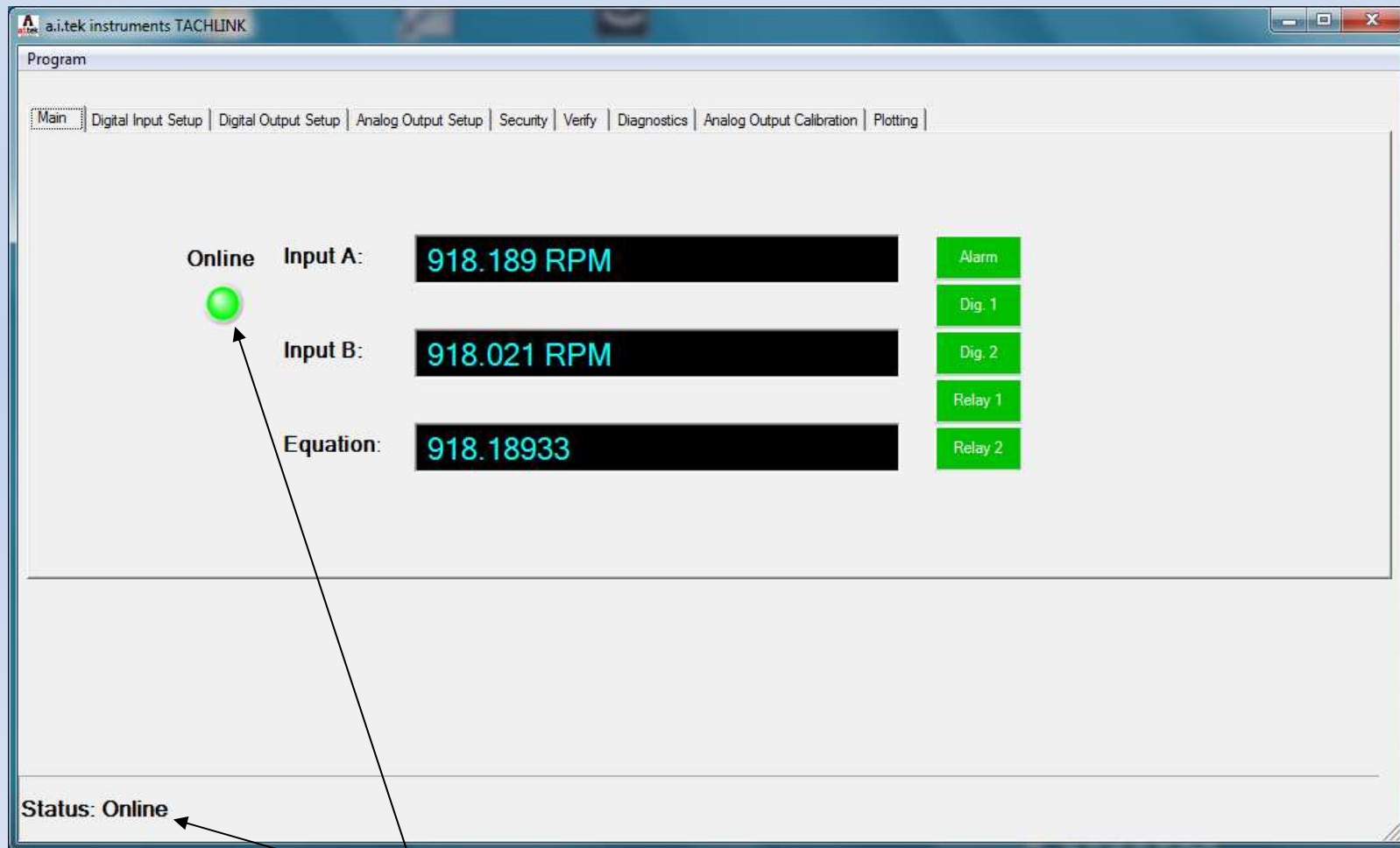
Notification that Drivers have installed successfully



TACHLINK INSTALLATION FOR WINDOWS 7, 32 & 64 BIT OPERATING SYSTEMS



Re- launch TACHLINK with Tachometer connected to PC via USB



The TACHLINK main screen will indicate there is communication between PC and tachometer. (The “Online” light will be green and lit)